

Kapell

Driftsbygning

Ny gravplass nord
630 m²

Ny Kirke i våler

Ny gravplass sør
510 m²

Kirkeruinen

FV 508

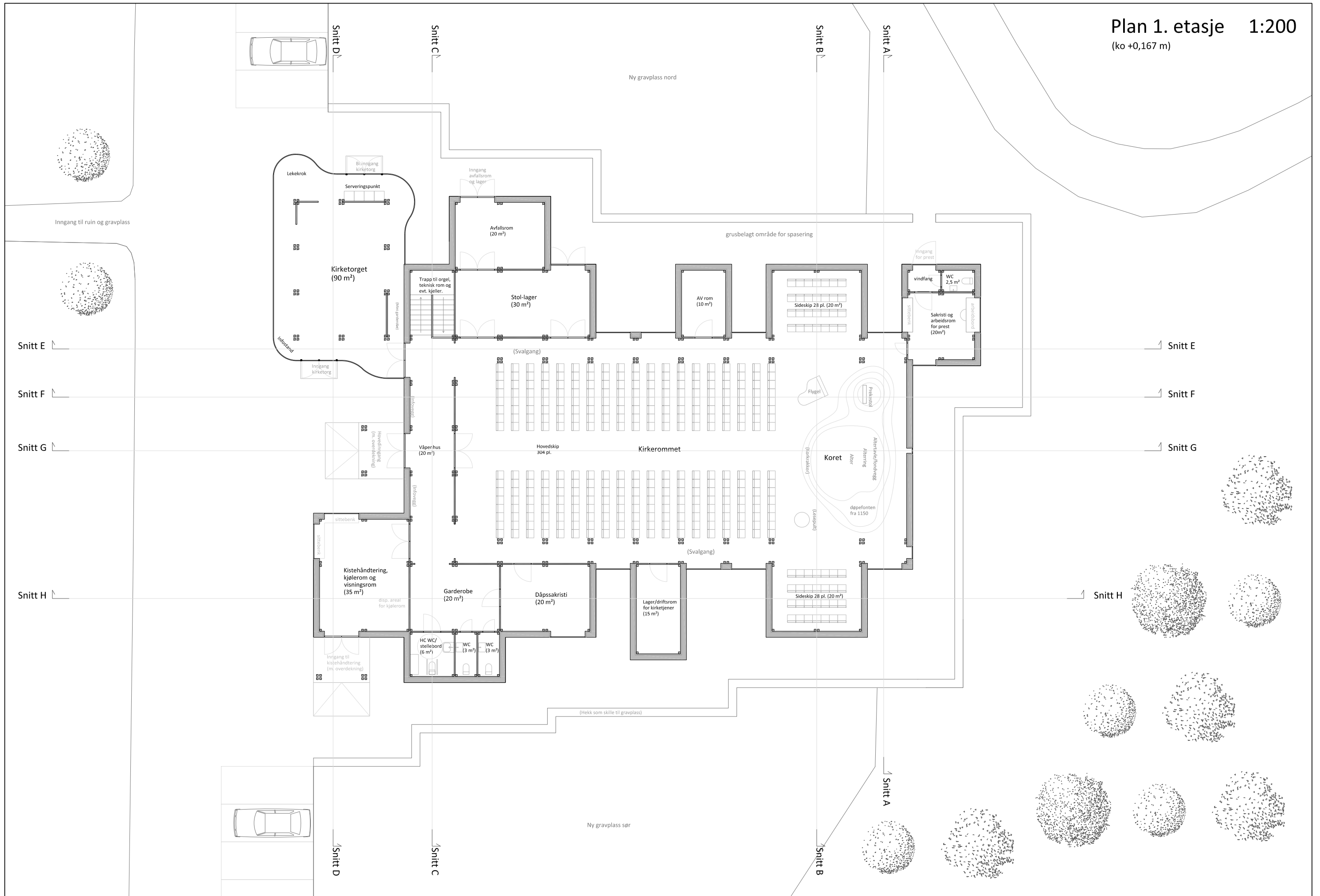
8 p.plasser

3 p.plasser

6 p.plasser



Plan 1. etasje 1:200
(ko +0,167 m)

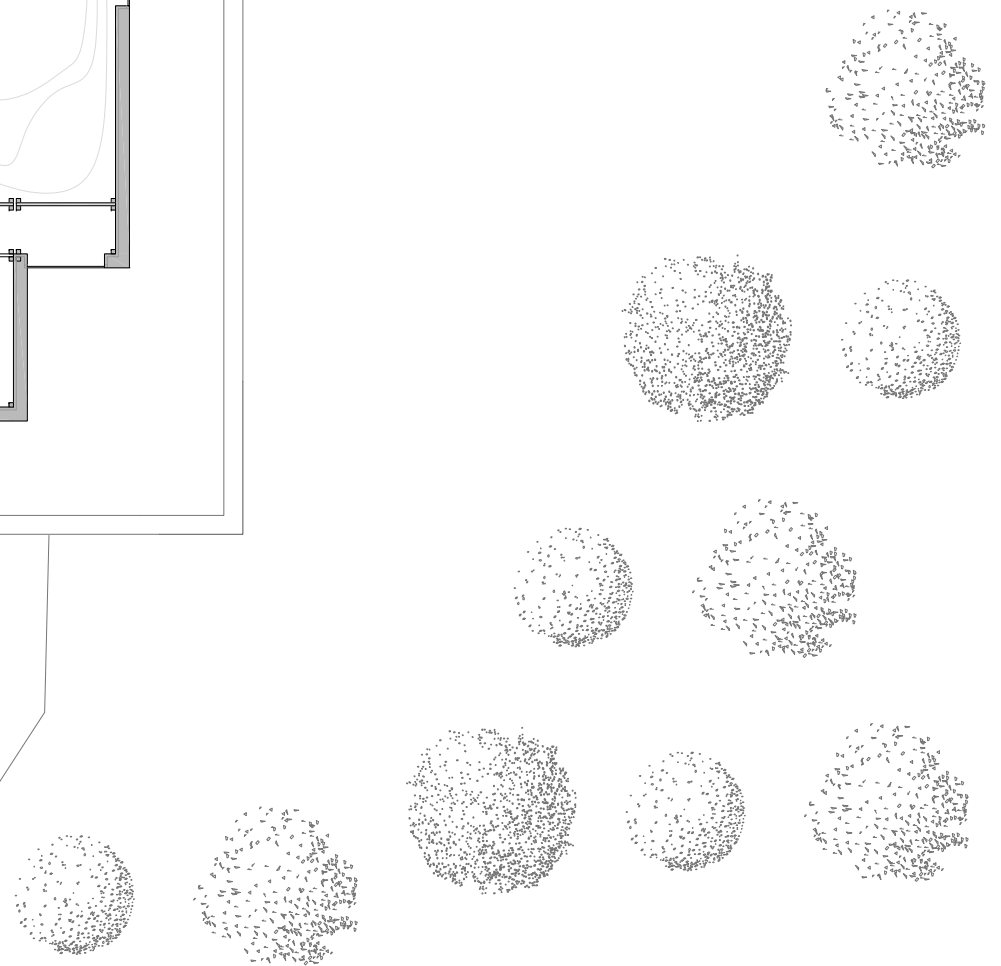
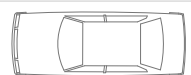
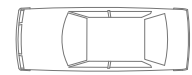
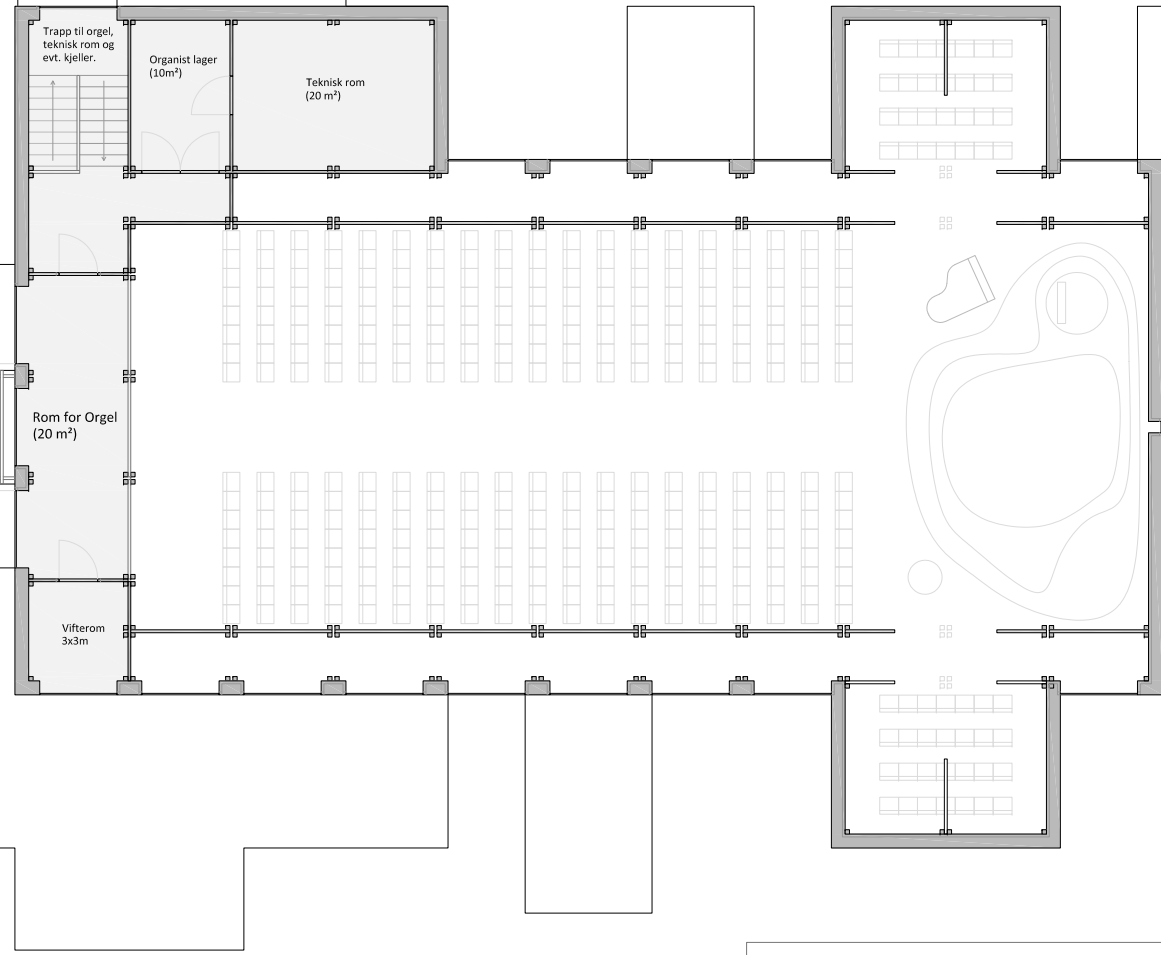


Plan 2. etasje 1:200
(ko +3,617 m)

Ny gravplass nord

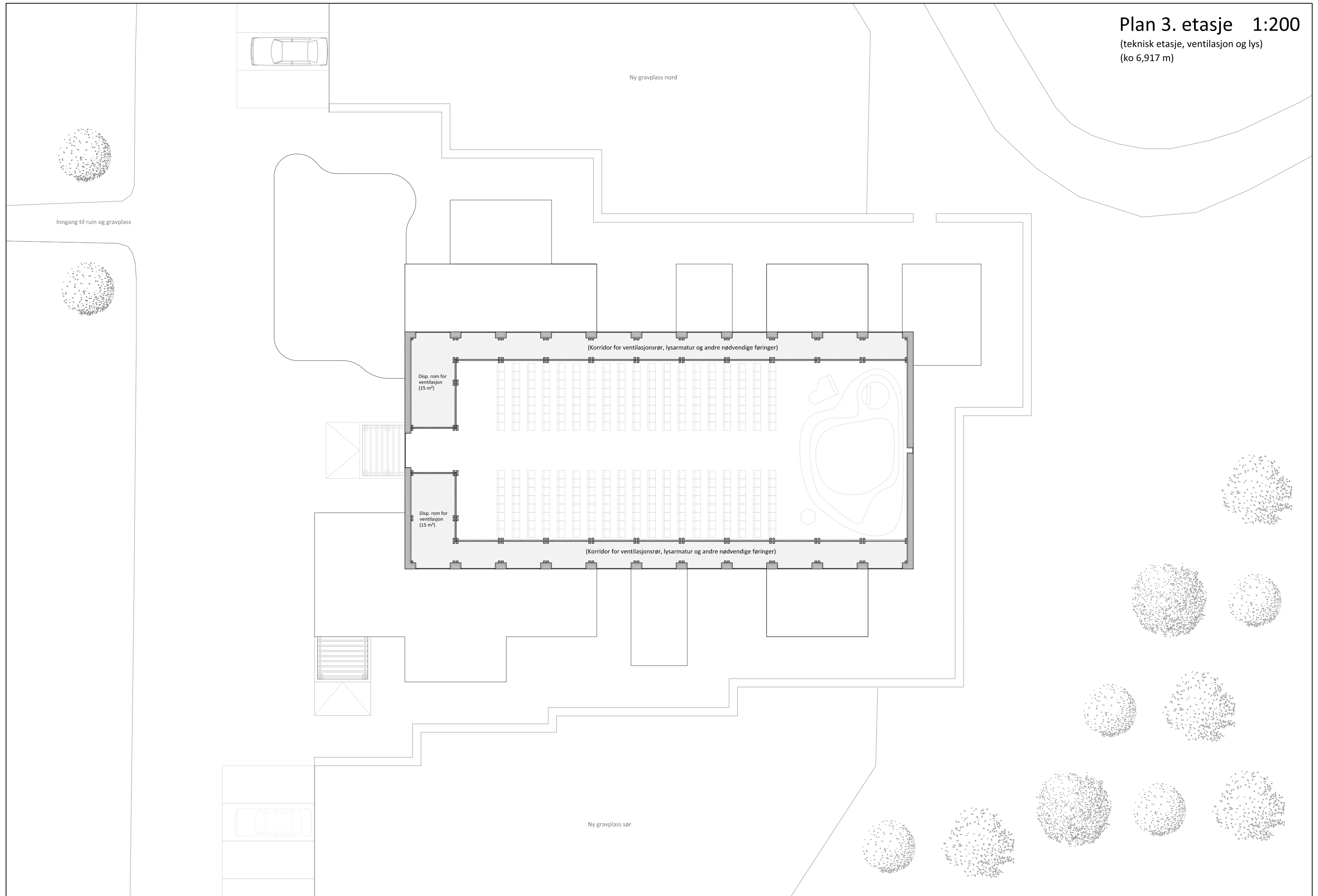
Ny gravplass sør

Inngang til ruin og gravplass

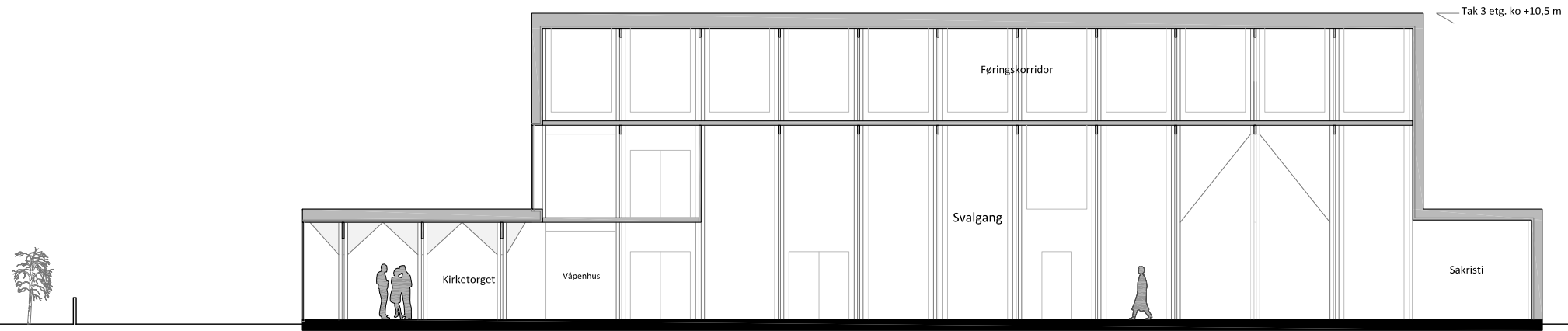


Plan 3. etasje 1:200

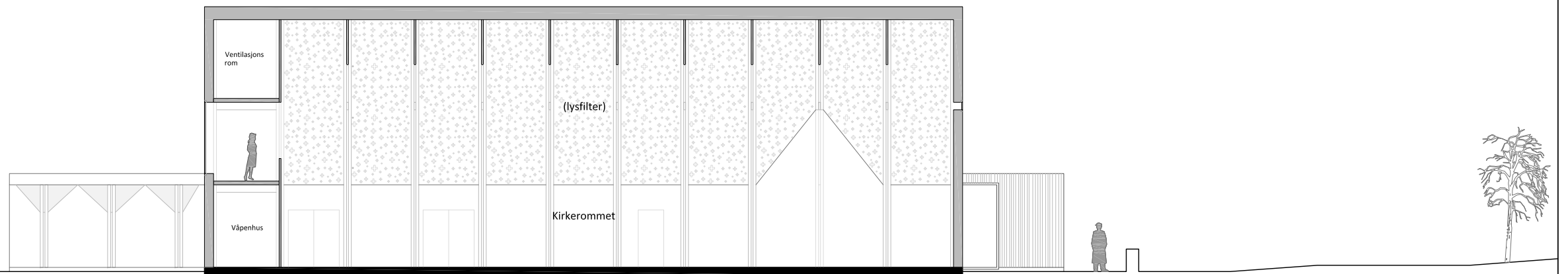
(teknisk etasje, ventilasjon og lys)
(ko 6,917 m)



Langsnitt 1:200



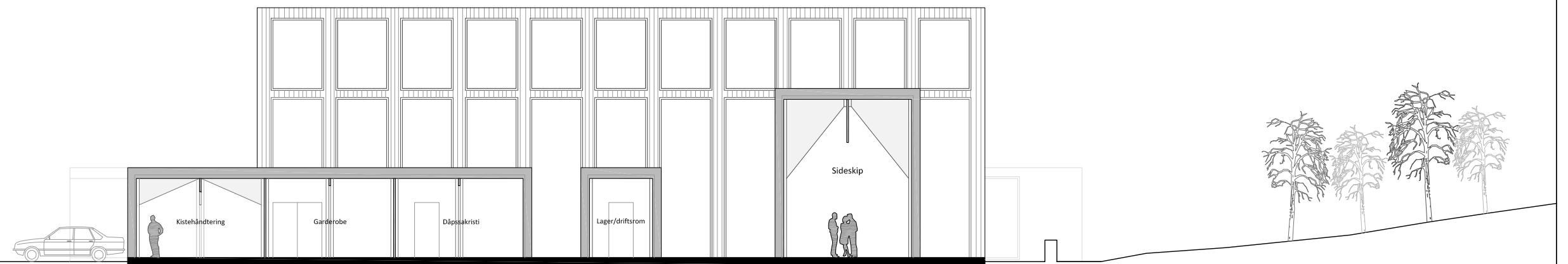
Snitt E
svalgang



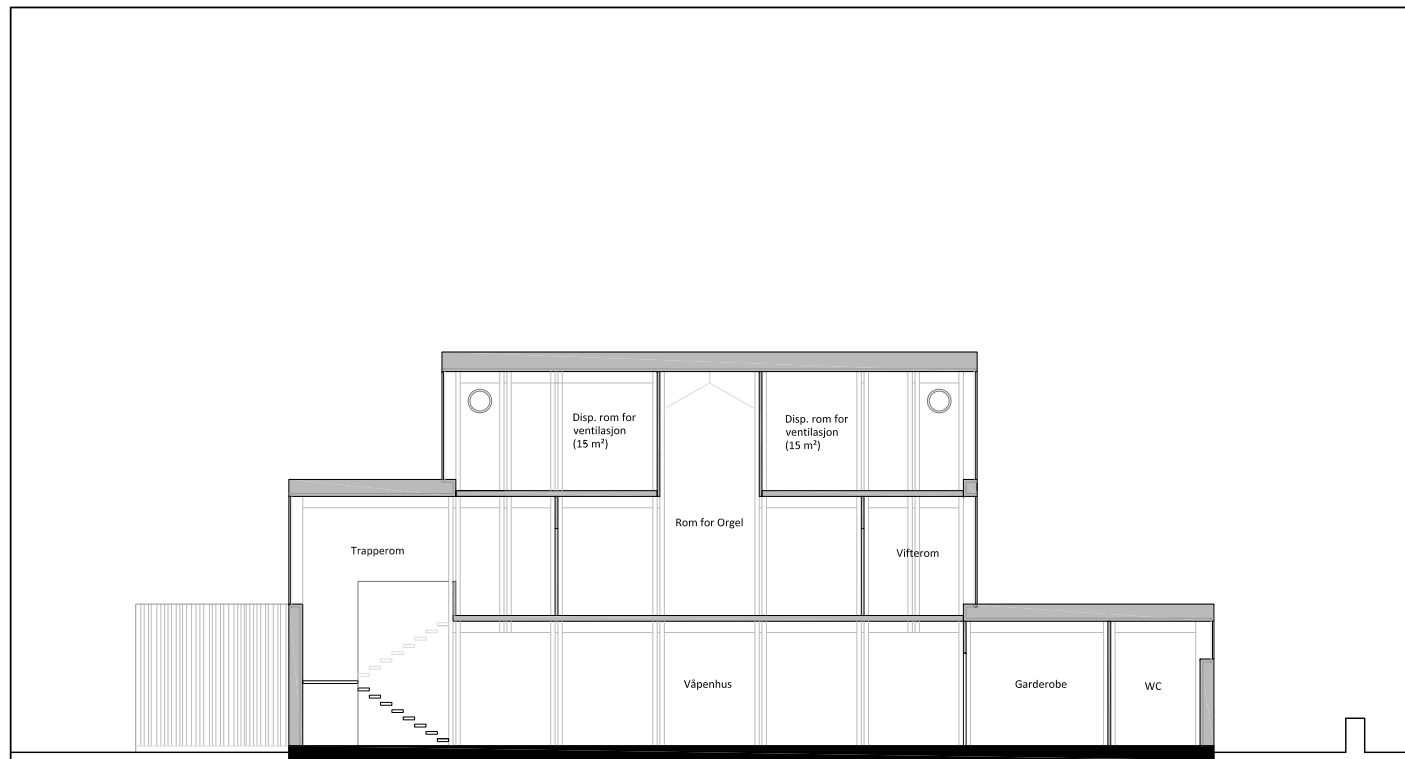
Snitt F
med lysfilter tegnet inn



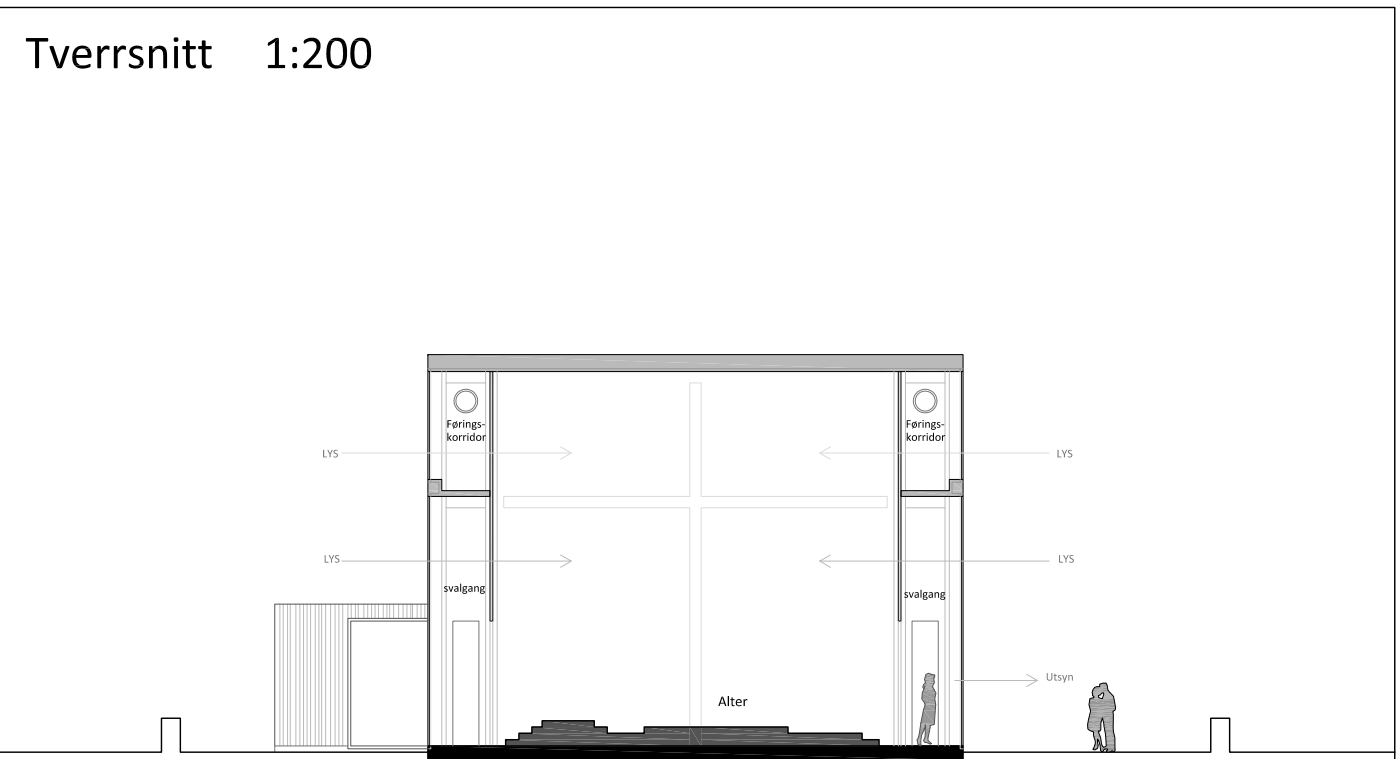
Snitt G
midten



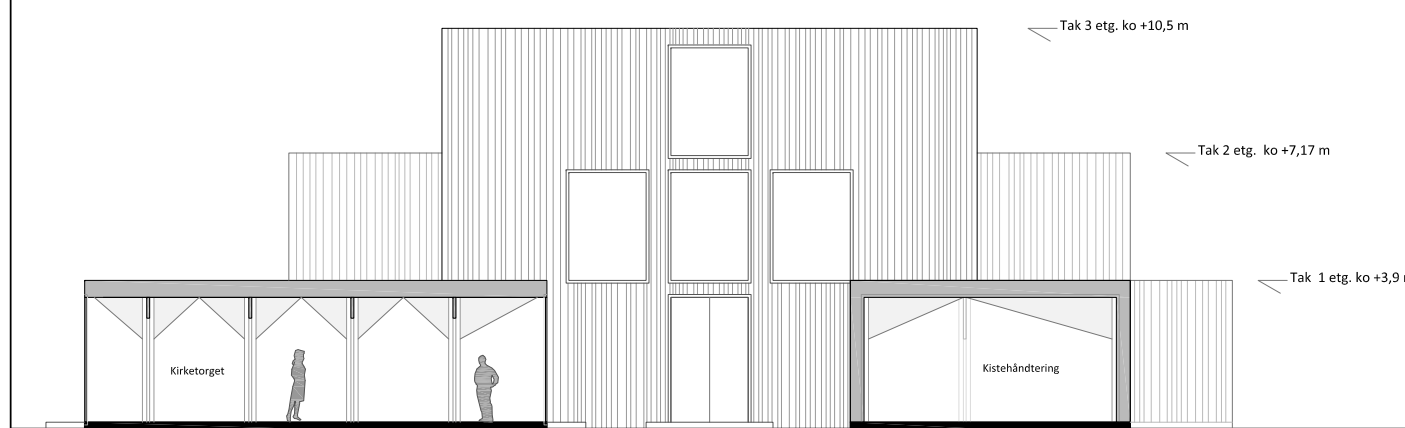
Snitt H
programbokser mot sør
kirkerommet i oppriss bak



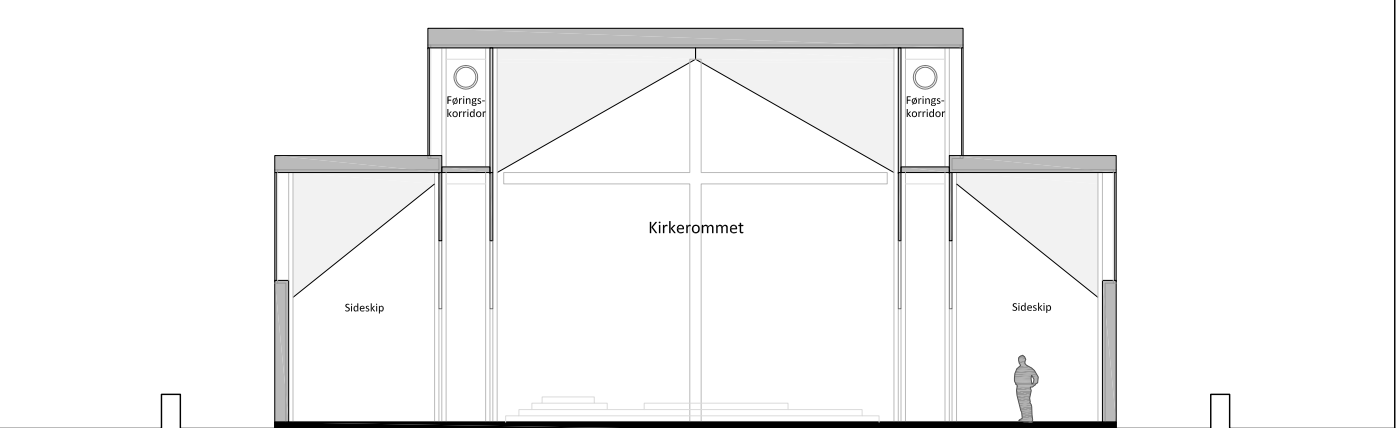
Snitt C
våpenhus



Snitt A
kor og alter
(Lys og lyft)



Snitt D
torget og
kistemottak



Snitt B
sideskipene